

I pledge my support to the LVPEI mission to reach 3 million people

Name \_\_\_\_\_ MR No (for LVPEI patients) \_\_\_\_\_  
Address \_\_\_\_\_  
₹ \_\_\_\_\_ Rupees (in words) \_\_\_\_\_  
Cheque / Draft No \_\_\_\_\_ Date \_\_\_\_\_ Drawn on (Bank/Branch) \_\_\_\_\_  
Signature \_\_\_\_\_

You can specify a person or organization in whose name you wish to sponsor these services.

Commemoration in the name of \_\_\_\_\_  
Chosen date of commemoration \_\_\_\_\_ Number of years \_\_\_\_\_

Contributions may be made in favour of Hyderabad Eye Institute or Hyderabad Eye Research Foundation. LV Prasad Eye Institute is governed by these two not-for-profit trusts. Donations to Hyderabad Eye Institute (HEI) are 50% tax-exempt under Section 80 G and donations to Hyderabad Eye Research Foundation (HERF) are 175% tax-exempt under Section 35 (i) & (ii) of the Income Tax Act.

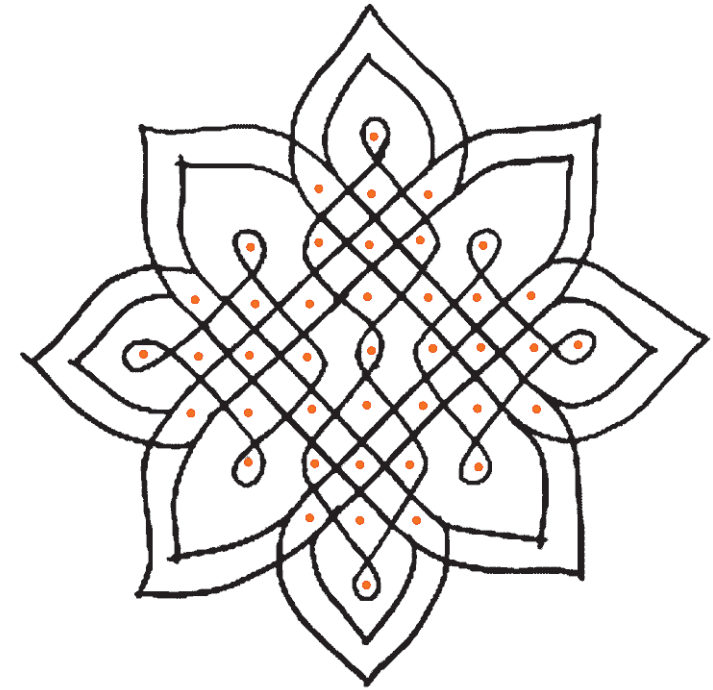
To make a donation online, please visit [www.lvpei.org](http://www.lvpei.org) or contact Sam Balasundaram at [sbala@lvpei.org](mailto:sbala@lvpei.org)/Phone: 09849014669



LV Prasad Eye Institute  
Kallam Anji Reddy Campus  
LV Prasad Marg, Banjara Hills  
Hyderabad 500034, India  
Tel: +91 40 30612567  
Fax: +91 40 23548271  
Email: [sbala@lvpei.org](mailto:sbala@lvpei.org)  
Website: [www.lvpei.org](http://www.lvpei.org)



Thank you  
ధన్యవాదములు  
धन्यवाद



LV Prasad Eye Institute, India



LV Prasad Eye Institute's network is now reaching over 1.4 million people every year, but much more needs to be done. Before you read further we need to say 'Thank You', 'ధన్యవాదములు', 'धन्यवाद' for it is with your support that we have achieved so much thus far.

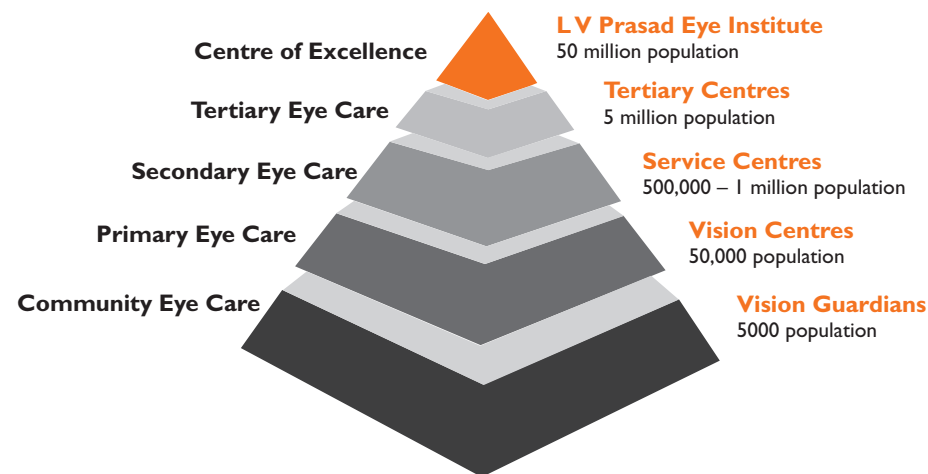
To realize our goals of eliminating avoidable blindness by the year 2020, we need to:

**Reach out to 3 million patients directly**

**Reach out to 2 billion (2000 million) population more through our associations – alumni and partners**

LV Prasad Eye Institute is on the threshold of a major expansion and we invite you to partner with us in our mission to help people see.

### LVPEI Eye Health Pyramid



LV Prasad Eye Institute is the only institute in the world with operations at every level in the eye care pyramid, from small rural vision screening centres to a world-class Centre of Excellence.

### Goal

To increase our present capacity at our **Centre of Excellence** in Hyderabad from 750-800 outpatient visits to 1200 visits and perform 120-140 surgeries per day, six days a week.

To begin with, LVPEI is setting up an extension center barely a kilometer away. By 2012, we will build and open a brand new ultra modern patient care facility adjacent to the present building. The project cost is expected to be ₹ 40 crores. We have received firm commitments from many supporters, including one donor who is bearing a major part of the cost.

### Goal

Opening a third **tertiary care center** at Vijayawada in late January 2011

Project cost for the first phase – ₹ 12 crores. A large part of the funding for this center has come from two major donors – one belonging to Andhra Pradesh and the other from abroad who helped set up the Children's Eye Care Centre. However, more support is needed to develop this into a full-fledged comprehensive tertiary care centre, covering a population of 5 districts, so that people in those areas need not travel far to access high quality eye care services.

### Goal

**Double the capacity of the two existing tertiary centers** in Bhubaneswar and Visakhapatnam from 6000 to 12,000 patients per year by 2015.

This target will be achieved by adding to the infrastructure, equipment and human resources, as well as by building a network of secondary and primary centres in rural areas (replicating our model in Andhra Pradesh and in Orissa also). Setting up secondary care Service Centres at a cost of ₹ 2 crores each and primary care Vision Centres at a cost of ₹ 8 lakhs each in this area is the challenge. Patients with more complex eye problems will be referred to the Bhubaneswar and Visakhapatnam tertiary centres.

**Goals achieved in secondary care:** The link between rural and urban eye health in Andhra Pradesh are the secondary care **Service Centres** at district level towns, of which we already have 8. By the year 2013 we will establish another 4 such centers, 2 of them in 2011. All the centers are established with support from local philanthropists and communities at a cost of ₹ 2 crores each. These centers reach out to a population of 500,000 and more, almost 65% of the services are provided at no cost to the patient. The secondary centers are connected to 10 primary care Vision Centres within a radius of 30 to 50 kms. These secondary care centers undertake cataract and minor eye surgeries, refractive error correction through prescription glasses and medical treatment.

### Goal

Our primary care **Vision Centres** that screen up to 50,000 population each, at no cost to the patients, in remote rural Andhra Pradesh will grow from 65 to over a 120 by 2013. Again, we are overwhelmed by the support we continue to receive from international NGOs that are committed to providing resources for primary eye care.

The challenge is to make the Vision Centres self-sustainable and continue to provide free eye care to the rural population. We are launching a novel scheme '**Adopt a Vision Centre**' wherein you can

support the annual expenses of running a Vision Centre in or near your birth place at a cost of US \$ 2000 or ₹ 100,000 per year.

**Research and development** at LVPEI will take a major leap with the institute adding 10,000 square feet of space to its research facility immediately and 20,000 square feet of additional space by 2012. The institute has garnered major funding for research in the areas of stem cell biology, molecular genetics and clinical research.

**Low vision and rehabilitation** of those with incurable visual impairment have also made great strides in the facilities and services offered at all tertiary and secondary care centers. A major initiative at the Centre of Excellence in Hyderabad was the addition of an Audio Digital Library and Recording Centre, set up with the help of a youthful group from the IT industry. We further plan to strengthen and establish vision rehabilitation at all our tertiary and secondary centers.

Here are some areas of support for your consideration:

### Categories of Contribution

Institute for Eye Cancer	₹ 10 crores
Institute of Regenerative Ophthalmology	₹ 10 crores
Child Sight Institute	₹ 10 crores
Centre of Excellence for Diabetic Eye Disease	₹ 10 crores
One Specialty Service (For eg., Corneal Transplantation, Ophthalmic Plastics, Refractive Surgery)	₹ 5 crores
Centre for Eye Care Education at Visakhapatnam and Vijayawada	₹ 5 crores (each campus)
Contribute to one Floor in our buildings	₹ 2 crores
Non-paying Services Centre (All services provided entirely free of cost)	₹ 2 crores (each campus)
One Research Laboratory	₹ 2 crores
One entire Clinic	₹ 1 crore
One Chair of Research/Clinical Service/Public Health	₹ 1 crore
Set of 5 Examination Rooms	₹ 50 lakhs
One Diagnostic Laboratory for Special Tests (Ophthalmic)	₹ 25 lakhs
One Examination Room (in the Outpatient Clinic)	₹ 10 lakhs
One Patient Waiting Area	₹ 5 lakhs

