

Ramachandra Pararajasegaram Community Eye Health Education Centre

Education Programs



**Gullapalli Pratibha Rao International
Centre for Advancement of Rural Eye care**

L V Prasad Eye Institute, Hyderabad, India

Vision

To create excellent and equitable eye care systems that reach all those in need.



Mission

The mission of L V Prasad Eye Institute is to be a centre of excellence in eye care services, basic and clinical research into eye diseases and vision-threatening conditions, training, product development and rehabilitation for those with incurable visual disability, with a focus on extending equitable and efficient eye care to underserved populations in the developing world.



Contents

Introduction	4
Education Programs	9
Diploma Courses	
Diploma in Community Eye Health	10
Diploma in Eye Health Management	11
Certificate Courses	
Certificate course in Community Eye Health	12
eyePrompt - Essentials of Eye care Program Management	13
Community Eye Care and Community Based Rehabilitation of the Visually Impaired	14
Continuing Professional Development Programs	15
Admission Procedure	16
Faculty	17
Facilities at GPR ICARE	22
Testimonials	24

L V Prasad Eye Institute – An Introduction



Kallam Anji Reddy Campus, Hyderabad



Mithu Tulsi Chanrai Campus, Patia, Bhubaneswar



GMR Varalakshmi Campus, Visakhapatnam



Kode Venkatadri Chowdary Campus, Vijayawada



RSR Campus, Kadapa

LVPEI is a World Health Organization Collaborating Centre in developing human resources for prevention of blindness and providing training to eye care professionals from across the world. Training and education are recognized as key factors that influence the reach, range and quality of eye health service delivery. Therefore, the Institute strives to provide the highest quality of training and education through a committed faculty, complemented with the most advanced technological and methodological tools. The video-conferencing facilities in the Karam Chand Thapar Tele-Education Academy facilitate real-time interaction among LVPEI's four campuses as well as with collaborators globally. Education at LVPEI has three main objectives:

- To upgrade the skills of practicing ophthalmologists
- To provide opportunities to keep abreast of developments in the field of vision science and its application
- To equip new entrants to the field with the appropriate skills and knowledge

To improve the quality and reach of our education programs across the country and make them world class, The Academy of Eye Care Education came into existence in 2013 as the apex body of education and training, with all the education centres across the LVPEI campuses coming under its purview. The centre focuses on imparting quality education and training to all cadres of eye care professional across the four campuses of LVPEI. The Institute, since its inception has trained over 26,179 students from India and abroad in various training programs for eye care personnel at all levels.

The Academy of Eye Care Education encompasses

- Mark Nathaniel Thadikonda and Vijayamma Nannepaga Centre for Eye Care Education, Hyderabad
- Ramachandra Pararajasegaram Community Eye Health Education Centre, Hyderabad
- Brien Holden Institute of Optometry and Vision Sciences, Hyderabad
- Pathak Centre for Eye Care Education, Bhubaneswar
- Pathak Centre for Eye Care Education, Visakhapatnam
- Kode Venkatadri Chowdary Campus, Vijayawada

The LVPEI Eye Health Pyramid

In 1997, L V Prasad Eye Institute began work on a model that ensures excellent eye care for all, across villages and cities. Offering sustainable eye care delivery, the model comprises a five-level inter-connected structure, with permanent infrastructure and human resources at each level of care - from a Centre of Excellence at the apex to tertiary, secondary and primary centers, and community level vision health guardians at the base. The LVPEI Eye Health Pyramid model is based on the following assumptions:

- 90% of the blind and visually impaired live in developing countries, where huge disparities exist in service availability, affordability and quality.
- 80% of all blindness is avoidable.
- Effective Vision Centres at the primary care level in villages can entirely eliminate blindness resulting from refractive errors by prescribing spectacles. They can also detect potentially blinding problems; address conditions like Vitamin A deficiency; detect cataract; certain glaucoma; and diabetic retinopathy. Thus, 25% of avoidable blindness can be tackled at this level.
- At the next level, secondary care Service Centres can manage 75% of all avoidable blindness.
- This means, of all the people with visual impairment, only 25% need to travel to the cities to access tertiary care.
- Each level generates income while providing care at no cost to the economically underprivileged through a system of cross-subsidy and delivers good quality eye care, irrespective of a person's ability to pay.

- Close linkages between the different levels of the pyramid ensure comprehensive care for everyone who needs it.
- The Government of India has adopted the pyramid model of eye care service delivery in its current five-year plan budget. Several other organizations in India and other developing countries have also implemented other aspects of the model.

At the base of the pyramid are VISION GUARDIANS that represent community involvement. Vision guardians comprise trained young people who keep a close vigil on the eye health of about 5,000 persons within communities, through door-to-door surveys and other informal means.

VISION CENTRES form the next level and serve the primary eye health needs of the community. Drawing upon local talent and staffed by persons from the local community, each Vision Centre caters to a cluster of villages, individually servicing a target of around 50,000 people.

SECONDARY EYE CARE CENTRES are networked to the Vision Centres and each serves a population of 500,000 persons. These centres provide care that can diagnose the complete range of ophthalmological diseases and offer high quality surgical care for cataract - the most common cause of blindness. These centres draw upon local talent too, with team members recruited from the local community and trained at LVPEI's advanced tertiary centres.

TERTIARY CARE HOSPITALS / TRAINING CENTRES are linked to Secondary Centers and each serves a population of 5 million persons. These centres provide a comprehensive range of services and also serve as training centres to the secondary centres.

CENTRES OF EXCELLENCE are linked to tertiary centers and each serves a population of 50 million persons. These centres treat complex diseases, train the trainers in subspecialties & rehabilitation and engage in advocacy.

The LVPEI model draws the most marginalized populations into the health care system, providing affordable or free eye care, without compromising on quality. Vision Centres and Service centres can entirely eliminate 75% of all avoidable blindness due to the need for spectacles, detect potentially blinding problems. Thus only 25% vision impaired people in rural, remote areas need to travel to the cities to access tertiary care.

Gullapalli Pratibha Rao International Centre for Advancement of Rural Eye care

The Gullapalli Pratibha Rao International Centre for Advancement of Rural Eye care (GPR ICARE) was founded in 1998, and is an integral part of the Institute. All LVPEI's community eye care services are planned and managed by GPR ICARE. Till date 1008 candidates have been trained through GPR ICARE.

GPR ICARE strives toward the following major objectives:

- To develop high quality self-sustaining eye care services to reduce blindness in rural and unreached India, and other parts of the developing world
- To train all cadres of eye care personnel to provide excellent and efficient eye care services
- To participate in the planning of eye health initiatives in the developing world based on well-documented and reliable epidemiological information about blindness and visual impairment among the population
- To undertake operations and research projects to understand the best way to deliver eye care services to entire communities.

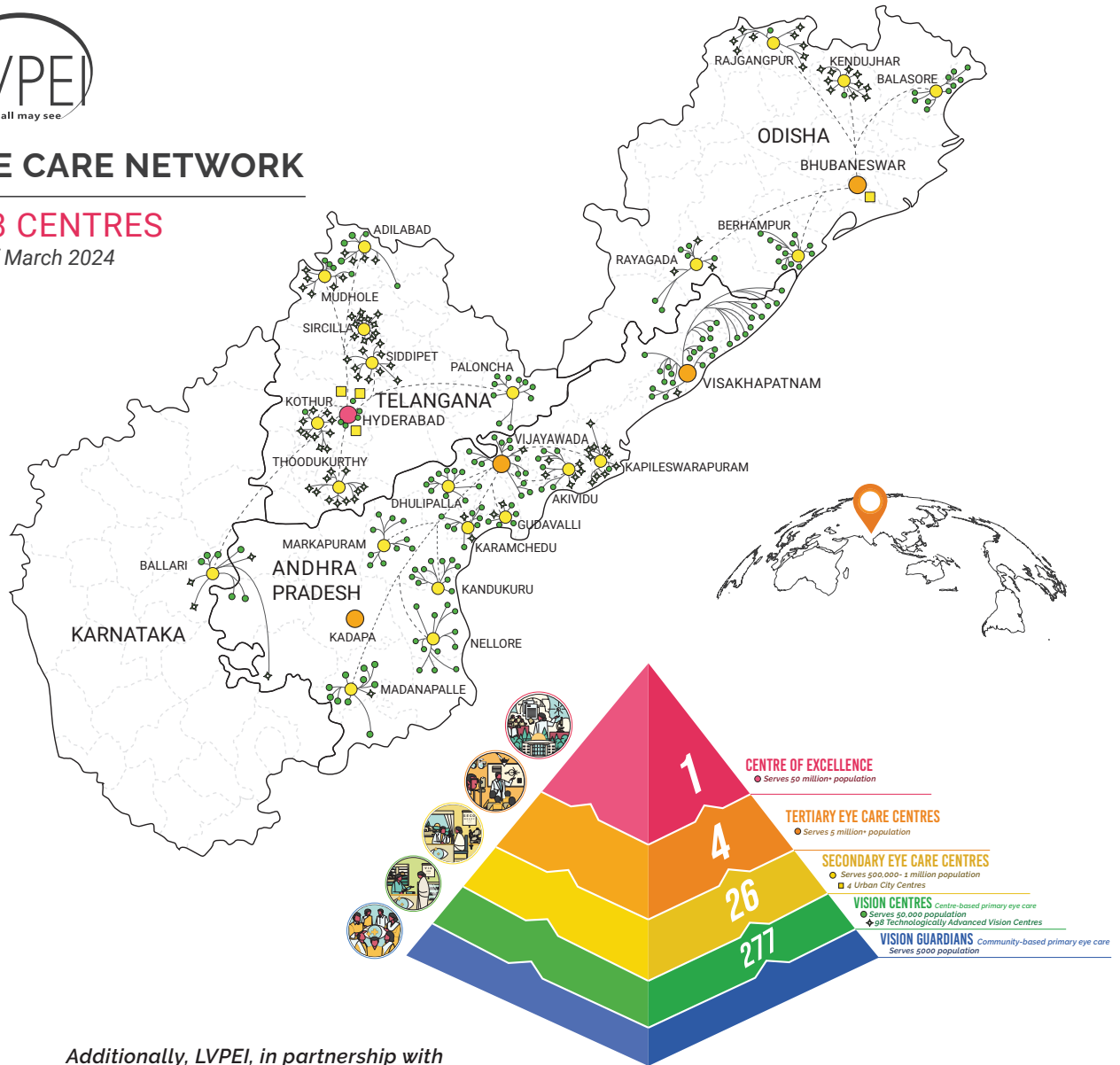
The LVPEI Eye Care Network



EYE CARE NETWORK

308 CENTRES

As of March 2024



Additionally, LVPEI, in partnership with the Government of Liberia, has established and manages the Liberia Eye Centre in Monrovia, the capital city of Liberia.



Ramachandra Pararajasegaram Community Eye Health Education Centre

Dr Ramachandra Pararajasegaram, former WHO Regional Advisor and Consultant, and former President of the International Agency for the Prevention of Blindness have been a major influence on LVPEI's community eye health initiatives during its 31-year journey. To acknowledge Prof. Pararajasegaram's role and guidance, GPR ICARE's educational component was named the "Ramachandra Pararajasegaram Community Eye Health Education Centre" in his honor on 17 October 2011, LVPEI's 25th Foundation Day.



Dr R Pararajasegaram unveils the plaque for the "Ramachandra Pararajasegaram Community Eye Health Education Centre"; also seen, Dr Rohit Khanna, Dr Gullapalli N Rao and Dr Padmaja K Rani. October 17, 2011

Accepting the honor, Prof Pararajasegaram said, "After 25 years of very active clinical practice in Sri Lanka; following a very illustrious postgraduate training in the UK; it was a three-month volunteer stint for the then Royal Commonwealth Society for the Blind (the present Sight Savers) in Northern Ghana that gave me the realization that there was more to the practice of our great profession than the sort of clinical practice most of my colleagues and I were engaged in. My conviction is that we must consider and practice the principles of community ophthalmology as an integral and intrinsic part of ophthalmic practice and not as a sub-specialty, as it is often done."

Education Programs

The principle of community eye health is to apply the knowledge of eye care to the community to reduce blindness and visual impairment. This specialized area of study is not included in the routine curriculum of ophthalmology teaching in India, and to the best of our knowledge, in other developing countries. Hence, the community eye health programs aim to help professionals and programs to focus on delivering quality eye care for the benefit of the community as a whole.

Demographic and epidemiological transitions and changing lifestyles have led to an increase in eye ailments and blindness. The knowledge and skills required to prevent and treat visual impairment, and rehabilitate the blind and the visually impaired, not only enhances the quality of their lives, but also benefits society. The skills learnt from this program can be applied to other health care and development programs.

Course	Duration	Session Dates & No. of Candidates	Modules/Objectives	Eligibility
Diploma in Community Eye Health (Offered in Collaboration with University of Hyderabad)	1 Year	June/July every year	Team 1: 6 months <ul style="list-style-type: none"> CEH 101: Introduction & essential of Community Eye Health CEH 102: Epidemiology of common eye condition in adults & children CEH 103: Research methods in Community Eye Health CEH 104: Planning, monitoring, and management of eye care programs Team 2: 6 months <ul style="list-style-type: none"> CEH:201: Health Economical and sub sustainability in eye health CEH 202: Resource mobilization, advocacy, and social marketing in eye health CEH 203: Universal Eye Health and comprehensive eye care models CEH 204: Mandatory project in Community Eye Health 	Graduates in Medicine, Dentistry, AYUSH, Optometry, Nursing, Allied Health Science, Nutrition, Health care and Hospital Administration & Management.
Diploma in Eye Health Management (DEHM)	1 Year	August (1st Monday) 10-15	<ul style="list-style-type: none"> Introduction to course Clinical Services Support Services – Opticals, pharmacy, Medical Records, Accounts, Eye Banking, Procurement, Stores, Biomedical and Maintenance, HR, Community Outreach and General Administration 	Graduates interested in pursuing a career as administrators
Certificate course in Community Eye Health	4 Weeks	November (2nd Monday) 10-15	<ul style="list-style-type: none"> Acquire the knowledge and understanding of the core elements of community eye health Know how to apply the core elements for activities related to the prevention of blindness 	Health professionals working in eye health programs. Any candidate, preferably graduates, and/or at least with 2 years of work experience in eye care
eyePromt - Essentials of Eye care Program Management	2-3 weeks	July (2nd and 3rd weeks) 10-15	<ul style="list-style-type: none"> Overview for managers in the field of eye care to effectively manage eye care programs 	Graduates working in eye care with the government/ NGOs/private sector for at least 2 years in a supervisory/senior position
Comprehensive Community Eye Care & Community Based Rehabilitation (CBR) of the Visually Impaired	6 weeks	Variable 10-15	<ul style="list-style-type: none"> To prepare grassroots level health care and rehabilitation personnel to facilitate Community Based Eye Health and Community Based Rehabilitation Services To enhance knowledge in advocating inclusion of persons with disabilities 	Persons working in organizations involved in health care service delivery, rural and urban community development programs, eye hospitals and other welfare organizations

Diploma in Community Eye Health *(Online Program)*

(Offered in Collaboration with University of Hyderabad)

Course objective

Community Eye Health (CEH) extends the individual patientbased traditional clinical practice of ophthalmology to the assessment and facilitation of good eye health to the population as a whole through using an interdisciplinary and multidisciplinary approach.

This course aims to help professionals and programs to focus on delivering quality eye care to benefit the population. Since the delivery of the course covers a broad base of competencies, the skills learnt from this program can be applied to other health care and development programs.

Course structure

Term 1: 6 Months

CEH 101 - Introduction & Essentials of Community Eye Health.

CEH 102 - Epidemiology of common eye conditions in adults & children.

CEH 103 - Research methods in CEH.

CEH 104 - Planning, monitoring and management of eye care programs.

Term 2: 6 months

CEH 201 - Health Economics and Sustainability in eye health.

CEH 202 - Resource mobilization, advocacy and social marketing in eye health.

CEH 203 - Universal Eye Health and Comprehensive eye care models.

CEH 204 - Mandatory Project in Community Eye Health.

Eligibility

Graduate in Medicine, Dentistry, AYUSH, Optometry, Nursing, Allied Health Sciences, Nutrition, Health Care and Hospital Administration & Management, including Life Sciences discipline and any Science graduate with Biology as a core subject. Other graduates keen should have demonstrable health or hospital program working experience of minimum one full year and produce certificate of evidence and attach it with application when applying for this program.

Teaching Methodology

Distance and virtual learning program with online classes in each term

Course Duration	Commencement	Course Fee (INR)
1 year	1st Monday in June / July (every year)	INR 50,000

Expected Outcomes

- Acquire the knowledge and understanding of the core elements of community eye health
- Know how to apply the core elements for activities related to the prevention of blindness
- Empower peers and subordinates at their work areas to assist in CEH activities
- Use the broad-based curriculum to implement systems in any health-related field
- Become effective communicators and carry out advocacy for CEH and development programs

Course Conveners

Dr Srinivas Marmamula

L V Prasad Eye Institute

E-mail: sri.marmamula@lvpei.org

Prof B R Shamanna

School of Medical Science

University of Hyderabad

E-mail: brsham@uohyd.ac.in

Dr Konda V Nagaraju

E-mail: knr@uohyd.ac.in

Diploma in Eye Health Management

Course Objective

The objective of this course is to impart training in comprehensive eye health management so that administrators can efficiently and effectively manage the resources required to provide eye care services. The program, developed in-house, has been updated to incorporate advances in eye care service delivery as well as management of eye hospitals (at both the secondary and tertiary levels).

Course Structure

The one-year program comprises five modules. Each module begins with classroom based theory lessons, followed by a related practical internship posting at a tertiary and secondary centre for 45-60 days. Upon the completion of the internship, a detailed review and evaluation of students is performed. The classes are taught by experienced administrators and managers, some of whom serve as mentors.

Course Outline

Module 1 : Introduction to Course

Module 2 : Management of Clinical Services

Module 3 : Management of Support Services – I
(Opticals, Pharmacy, Medical Records, Accounts, Eye Banking)

Module 4 : Management of Support Services – II
(Procurement, Stores, Biomedical and Maintenance, HR)

Module 5 : Management of Support Services – III
(Community Outreach and General Administration)

Eligibility

Graduates of any discipline with interest in eye care management or administration.

Teaching Methodology

The curriculum balances theoretical and practical coursework and is delivered through lectures; presentations; group Discussions; teamwork; projects; and exercises.

Course Duration	Commencement	Course Fee (INR)
1 year	1st Monday in August (every year)	INR 156,000

Expected Outcomes

Students graduating from the program will be able to manage a secondary level eye care hospital fairly independently with limited supervision. Successful students will also be able to work as administrators in tertiary level eye care hospitals. All graduating students will gain an understanding of the systems and processes required to operate an eye hospital at the secondary or tertiary level of care.

Course Conveners

Dr Rajashekar Varda
E-mail: shekar@lvpei.org

Madhukuri Sitaramanjaneyulu
E-mail: anji@lvpei.org

Certificate course in Community Eye Health

(Online Program)

Course Objective

The objective of this course is to impart training in comprehensive eye health management so that administrators can efficiently and effectively manage the resources required to provide eye care services. The program, developed in-house, has been updated to incorporate advances in eye care service delivery as well as management of eye hospitals (at both the secondary and tertiary levels).

Course Structure

This one month comprises four modules. These modules cover aspects related to the assessment of the eye care needs of the community, design and implementation of eye care programs, management and evaluation of eye care programs, development of models in community eye health and advocacy for community eye health.

Course Outline

- Module 1 :** Introduction to Community Eye Health, Definition, magnitude, and causes of visual impairment (Global and national), Epidemiology of common blinding conditions, Epidemiology of visual impairment in children, School eye Health, PubMed search to retrieve health information, Universal Eye Health
- Module 2 :** Research Methods in Public Eye Health, Introduction to Epidemiology, measures of disease frequency and effect, study designs, Introduction to Biostatistics, Concept of Vision Screening in eye health, Commonly used statistical tests in eye health, Rapid Assessment methods in eye care, Introduction to Excel
- Module 3 :** Community Eye Health and Program Management, Introduction to Program Management, Log frame analysis, Planning, management, and evaluation of eye care programs, Basic terms in health economics and sustainability, Communication skills (Presentations)
- Module 4 :** Advocacy in Community Eye Health, Introduction to proposal writing, Fundraising and Donor reporting in eye care, Advocacy and Social marketing in community eye health, Communication skills (Writing)

Teaching Methodology

- Didactic lectures
- Group activities and Individual project work
- Guided observation visits to community programs focused on various eye health issues including rehabilitation
- Observation on how the eye care facilities are managed at tertiary, secondary and primary level

Course Duration	Commencement	Course Fee (INR)
1 Month	Begins 2nd Monday November	INR 20,000

Expected Outcomes

Successful participants will acquire an understanding of the core aspects of community eye health, along with the ability to apply that knowledge to address issues and problems not only in the field of eye care but also to other healthcare related programs in developing countries like India.

Course convener

Dr Srinivas Marmamula

E-mail: sri.marmamula@lvpei.org

eyePrompt - Essentials of Eye Care Program Management *(Online Program)*

Course Objective

The successful implementation of eye care programs depends on the availability of trained administrators who are well versed with the principles of managing programs. Management of programs begins with planning and transition into the dual activities of assessment and implementation. This course is aimed at training managers in the field of eye care to effectively manage eye care programs so as to achieve the goals of VISION 2020: The Right to Sight program.

Course Outline

Module 1 : Envisioning and setting up a programme

Module 2 : Managing a programme

Module 3 : Monitoring and Evaluation of a programme

Eligibility

Graduates of any discipline, with at least three years of eye care experience in a supervisory role.

Teaching Methodology

The curriculum balances theoretical and practical coursework and is delivered through offline and online lectures, presentations, group discussions, teamwork, projects and exercises.

Course Duration	Commencement	Course Fee (INR)
2 Weeks	2nd & 3rd weeks of July	INR 10,000

Expected Outcomes

Upon the completion of the course, successful participants will demonstrate a thorough understanding of the dynamics of project planning, implementation and evaluation and gain the ability to develop project plans, implement programs effectively and measure the impact of the project.

Course convener

Asha Latha Mettla

E-mail: ashalatha@lvpei.org

Community Eye Care and Community Based Rehabilitation of the Visually Impaired

Course Objective

This course prepares grassroots level health care and rehabilitation personnel to facilitate Community Based Eye Health and Community Based Rehabilitation Services that supports access to all required services for the persons with permanent ailments / disabilities and their families, moreover, enhance knowledge in advocating inclusion of persons with disabilities in all aspects of wellbeing in the community settings.

Course Outline

Module 1 : Prevention of Visual Impairments and Promotion of Eye Health through Comprehensive Community Eye Care Service approach (2 Weeks)

Module 2 : Inclusive Community Based Rehabilitation for people with visual disabilities (4 Weeks)

Eligibility

Healthcare personnel engaged by Eye Hospitals / Govt. or Non Govt. organizations / Voluntary organizations for serving at grassroots level in both urban and rural communities.

Course Duration	Commencement	Course Fee (INR)
6 weeks	15 June / 17 January	INR 30,000

Expected Outcomes

Candidates will be able to assess the eye care needs of communities, facilitate eye care services, create eye health awareness, impart rehabilitation training to persons with visual impairment and community members, educate community groups and individuals and promote inclusion of persons with visual impairment in all walks of life.

Course convener

Jachin David Williams

E-mail: jachin@lvpei.org

Continuing Professional Development Programs

Continuing Professional Development (CPD) is essential for every professional and, more so, for those engaged in health service delivery. CPD uses a structured approach to learning to ensure competence in practice, knowledge, skills and practical experience. It involves any relevant learning activity - formal and structured or informal and self-directed.

CPD is also a key factor for retaining the trained human force for an organization's sustainability. GPRICARE offers CPD programs for all cadres of professionals engaged in eye care service delivery. The programs are designed specifically to address the needs of each cadre in short, focused programs. The timings are flexible and can be adapted to the requirements of the requesting institution. The CPD courses adopt a combined methodology of brief classroom sessions, practical observation and elaborate discussions on the work area. The course material is given in English; however, the discussion is conducted in three languages - English, Telugu and Hindi.

Some of these CPD Course can be offered off site at other institutions on request.

Continuing Professional Development Courses – Non-Technical

S. No	Course	Audience	Duration	Session dates	No of Candidates per course	Course Fee
1	Vision Centre coordinators / Primary Eye Care managers	Vision Centre Coordinators/ Primary Eye Care managers	Two days	Twice a year	20 - 25	Rs 10,000
2	Facilities management	Secondary Centre Administrators/ Hospital Administrators	One day	Twice a year	20 - 25	Rs 5,000
3	Human Resource management	Secondary Centre Administrators/ Hospital Administrators	One day	Twice a year	20 - 25	Rs 5,000
4	Information Systems and Electronic Medical Records	Secondary Centre Administrators/ Hospital Administrators	One day	Once a year	20 - 25	Rs 5,000
5	Patient Counseling	Patient Counselors/ Secondary Center Administrators/ Hospital Administrators	One day	Twice a year	20 - 25	Rs 5,000
6	Patient safety	All staff of a given hospital	One day	Twice a year	20 - 25	Rs 5,000
7	Accounts & Finance management	Accountants / Secondary Centre Administrators	One day	Twice a year	20 - 25	Rs 5,000
8	Stores and inventory management	Administrators / Store Staff	One day	Once a year	20 - 25	Rs 5,000
9	Community Eye Health concepts for managers	Administrators/ Hospital Administrators	One day	Once a year	20 - 25	Rs 5,000
10	Crisis management	Administrators/ Hospital Administrators	Two day	Once a year	20 - 25	Rs 10,000
11	Community engagement	Administrators/ Hospital Administrators	One day	Once a year	20 - 25	Rs 5,000

Continuing Professional Development Courses – Technical

S. No	Course	Audience	Duration	Session dates	No of Candidates per course	Course Fee
1	Opticals training	Optical Staff	Three days	Twice a year	20 - 25	Rs 15,000
2	Clinical and non-clinical skills for Vision Technicians	Vision Technicians	Three days	Every Quarter	20 - 25	Rs 15,000
3	Biomedical/ Maintenance	Biomedical / maintenance Staff	Two days	Twice a year	20 - 25	Rs 10,000
4	Operation theatre technicians and ophthalmic nursing assistants	Operation theatre technicians and ophthalmic nursing assistants	Two days	Every Quarter	20 - 25	Rs 10,000

Admission Procedure

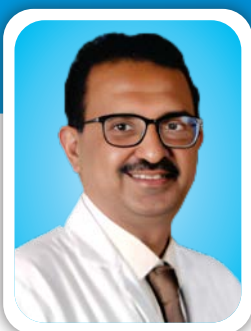
All the applications are available on our website throughout the year. Candidates can submit a soft copy of the application by email, except for community eye health online courses. For more details and for individual course brochures of ICARE training programs, please visit our website: www.lvpei.org.

Placement opportunities are available for trainees, who successfully complete the DEHM course, depending on the performance of the individual in the course and LVPEI's requirements. Some students may be recruited as Junior Administrators and posted at either a secondary centre or a tertiary centre.

Address for Correspondence

Srinivas Marmamula, M Sc (Community Eye Health), PhD
Ramachandra Pararajasegaram Community Eye Health Education Centre
Gullapalli Prathibha Rao International Centre for Advancement of Rural Eyecare
L V Prasad Eye Institute, GPR Campus
Don Bosco Nagar PO, Near Kali Mandir, Hyderabad 500 086
☎ +91 40 35225602, 📞 +91 83416 63046
✉ sri.marmamula@lvpei.org, icaretraining@lvpei.org; 🌐 www.lvpei.org

Faculty



Dr Rohit Khanna, MBBS, DOMS, MSc (CEH), MPH

Designation: Network Director, Public Health, Consultant Ophthalmologist

Specialisation: Cataract, Glaucoma

Gullapalli Pratibha Rao International Centre for Advancement of Rural Eye care, GPR Campus, Hyderabad

Dr Rohit C Khanna is the Network Director for the Public Health Unit of LVPEI – The Gullapalli Pratibha Rao International Centre for Advancement of Rural Eye Care. He is also an Adjunct Associate Professor of Ophthalmology at school of Medicine and Dentistry, University of Rochester, USA, and Conjoint Associate Professor at the University of New South Wales, Australia. An active participant in various working groups of the International Agency for Prevention of Blindness (IAPB) and World Health Organization (WHO), Dr Khanna is the IAPB Regional Chair for the South-East Asia region.

His areas of clinical interest are cataract and glaucoma. An alumnus of the Government Medical College in Nagpur and an LVPEI fellow, he holds dual master's degrees in Community Eye Health and Public Health from the London School of Hygiene and Tropical Medicine and The Johns Hopkins Bloomberg School of Public Health respectively.

Dr Khanna has led multiple studies, including the cohort of Andhra Pradesh Eye Disease Study (APEDS) – a milestone study. He has to his credit over 150 peer-reviewed publications, is on the editorial boards of several journals, and has been awarded several prestigious research grants for his work focusing on studying the outcomes of different interventions as well as on geriatric and child eye health.

In collaboration with the University of New South Wales, Dr Khanna was involved in designing the Master's Program in Community Eye Health and is also the course convenor of the Diploma and Master's program led by LVPEI in Community Eye Health. A recipient of the IAPB Eye Health Leader Award and Asia Pacific Academy of Ophthalmology's Blindness Prevention Award, Dr Khanna has vast experience in leading capacity building initiatives, and working as consultant for both national and global organizations, including IAPB and WHO.

Dr Khanna enjoys solving mathematic puzzles, exploring new places and making friends.



Dr Srinivas Marmamula, M.Sc (Community Eye Health), PhD

Designation: Network Associate Director – Public Health Research and Training

Specialisation: Community Optometry, Public Eye Health Research and Training
Gullapalli Pratibha Rao International Centre for Advancement of Rural Eye care,
GPR Campus, Hyderabad

Srinivas Marmamula received his initial optometry training at L V Prasad Eye Institute and then did his Masters in Community Eye Health from the London School of Hygiene and Tropical Medicine, University of London, with joint sponsorship from the Department for International Development (DFID - UK), British Council for Prevention of Blindness (Boulter Award), and LVPEI. In 2011, he completed his PhD from the School of Optometry and Vision Science, UNSW, Sydney with support from Vision CRC, Australia. Dr Marmamula did his post-doctoral research fellowship during 2012-2013 with Dr David Friedman at Wilmer Eye Institute, Johns Hopkins School of Medicine, Johns Hopkins University, Baltimore, MD, USA. He was also trained briefly in Massachusetts Eye and Ear at Harvard Medical School's Department of Ophthalmology in Boston, USA (2019). Dr Marmamula was the chief optometrist for LVPEI's landmark studies including Andhra Pradesh Eye Disease Study I (APEDS I, 1996 – 2000), Refractive Error Study in Children (2000) supported by the National Eye Institute and World Health Organization and APEDS III. He is the principal investigator for 'The Hyderabad Ocular Morbidity in Elderly Study (HOMES)' (2017-2020). He is also a faculty member at Brien Holden School of Optometry and Vision Science.

Dr Marmamula is the recipient of the prestigious Wellcome Trust / DBT India Alliance Early Career Fellowship - 2015. This is for a research project on visual impairment in elderly populations. He has also received many international travel grants and has participated as faculty in many workshops in India and abroad. He has over 100 publications to his credit in peer-reviewed journals and is on the editorial board of reputed journals.

Dr Marmamula was recently awarded a Wellcome Trust / DBT India Alliance Intermediate to conduct a longitudinal research study on elderly populations. His areas of interest are epidemiology of visual impairment, uncorrected refractive errors, presbyopia, eye health in the elderly and other vulnerable populations and training personnel for community eye care.



Asha Latha Mettla, MPhil.,

Designation: Network Associate Director

*Gullapalli Pratibha Rao International Centre for Advancement of Rural Eye care,
GPR Campus, Hyderabad*

AMs Asha Latha Mettla completed her Master's in Health Economics and MPhil in Health Systems and Hospital Management and Masters in Community Health and Nutrition. She started her professional career as a lecturer & eventually moved on to join Apollo Hospitals, Hyderabad as Clinical Research Administrator. She has also worked in the capacity of Whole Time Director in a Non-Banking Microfinance Company overseeing HR, training, operations, product development and general administration.

Her areas of interest include Project management and public health research into health economics.

At LVPEI, she is the Network Associate Director and heads the operations of Community Eye Care component besides public health project management. She is also the faculty for eye care program management modules and is working as a project manager for ENGINE project, sponsored by the Queens University, Belfast funded by the Wellcome Trust.



Dr Varsha Rath, DO

Designation: Head of Clinical activities, Secondary Centres

Specialisation: Cornea and Anterior Segment, Contact Lens,
Laser Refractive Surgery (LASIK)

Varsha Rath completed her graduation and post-graduation from Nagpur University, followed by a fellowship in cornea and anterior segment at LVPEI in 1994. She worked with the cornea and refractive surgery services of Shri Ganapati Netralaya, Jalna and has undergone special training in Boston Ocular Surface Prosthesis (Boston scleral contact lens) at Boston Foundation for Sight, USA. She joined LVPEI in 2007. Her areas of interest are excimer laser surgery including LASIK and PRK and PTK and contact lenses. She is also the coordinator for the Institute's acclaimed Indian Contact Lens Education Programme (ICLEP).



V Rajashekar, M Phil, MSW

Designation: Executive Director, GPR ICARE

Gullapalli Pratibha Rao International Centre for Advancement of Rural Eye care,
GPR Campus, Hyderabad

V Rajashekar completed his MPhil in Health Systems and Hospital Management and Masters in Social Work from Osmania University, Hyderabad. He later did his diploma in Community Eye Health and a fellowship in Eye Hospital Administration from LVPEI, Hyderabad.

At LVPEI he works in developing new secondary eye care centres, building their capacity by replicating the successful LVPEI eye health model, with the ultimate aim of providing comprehensive and quality eye care services to the deserving populations in the most deprived areas. He oversees the administrative activities of GPR-ICARE, and contributes in the areas of developing patient-care systems, management systems, and financial self-sustainability. He is a consultant for the evaluation of eye hospitals for Operation Eyesight Universal, India, and CBM, Regional Office (South), India. He is also a core member of the Liberia Eye Health Initiative.



Jachin David Williams A. M A, BMS, DCEH

Designation: Associate Public Health Specialist,

Gullapalli Pratibha Rao International Centre for Advancement of Rural Eye care,
GPR Campus, Hyderabad

Jachin David Williams graduated in English literature and mobility science for the disabled from Madras University, Tamil Nadu. He then did his masters in Sociology from Annamalai University, Tamil Nadu, followed by a Diploma in Community Eye Health (DCEH) from LVPEI, Hyderabad. He started his career as a Coordinator for the Comprehensive Community Based Rehabilitation and Education Program for the Differently Abled, and Mother and Child Health Program implemented by Moses Gnanabaranam Eye Hospital, Dharapuram, Tamil Nadu. Later he joined LVPEI and is currently in-charge of the Community Eye Health and Community Based Rehabilitation Programs of GPR-ICARE, LVPEI. He is also actively involved in teaching and research in community eye care. He has extensive experience in carrying-out community screenings and health awareness programs for various community sectors and institutions.



Niranjana Kumar Yenamala M A, BMS, DCEH

Designation: Network Assistant Director, VVC Operations

Specialisation: Operations Management, Patient Care Services Management and General Administration

Gullapalli Pratibha Rao International Centre for Advancement of Rural Eye care, GPR Campus, Hyderabad

Niranjana Kumar has done his graduation in Mathematics, Economics and Statistics, followed by post graduation in Personnel Management from Osmania University. He is also a postgraduate diploma holder in Business Management from University of Hyderabad. Currently he heads the operations of the LVPEI Vision Centre Network. Prior to that he was part of the Institute's projects team that was responsible for the construction of the new patient care facility at LVPEI Hyderabad. In the past he has been associated with Maytas Infra Pvt Ltd, Apollo Clinics and India Vision Institute (a joint initiative of LVPEI and Brien Holden Vision Institute) where in addition to overlooking the operations, he was also responsible for organizing health awareness programs and camps.

Niranjana has successfully attended the Eye Care Management Training Program organized by International Centre of Advancement of Rural Eye Care in association with ORBIS India and RP Centre for Ophthalmic Sciences, AIIMS, New Delhi. He actively participates in project management and health care related workshops and seminars.

We also draw upon the expertise of the medical and scientific faculty from the LVPEI network

Facilities at GPR ICARE

Classroom Facilities

GPR ICARE houses well-equipped classrooms, with computer projectors and air conditioners.

The lectures are given offline and online, with regular web conferences. GPR ICARE offers a Wi-Fi enabled campus to facilitate online educational activities. Videoconferencing facilities in all LVPEI campuses enable faculty and students to interact in real-time, and attend lectures, symposia and discussions held at all the campuses.

Stipend

Full-time sponsored students in the DEHM program are given a nominal stipend per month, while sponsored students receive a stipend of INR6000. Students receiving special fee packages or discounts and those attending individual courses are not eligible for any stipend.

Accommodation

Full-time students are provided shared accommodation in the GPR ICARE campus. The campus cafeteria serves Indian vegetarian food at subsidized rates. Students with special needs are assisted in their search for accommodation close to the campus in Kismatpur.

Libraries and Reading Rooms

In addition to the libraries at LVPEI's Centre of Excellence in Hyderabad and GPR ICARE's shared library with the Brien Holden Institute of Optometry & Vision Sciences.

Access to Rich International Expertise

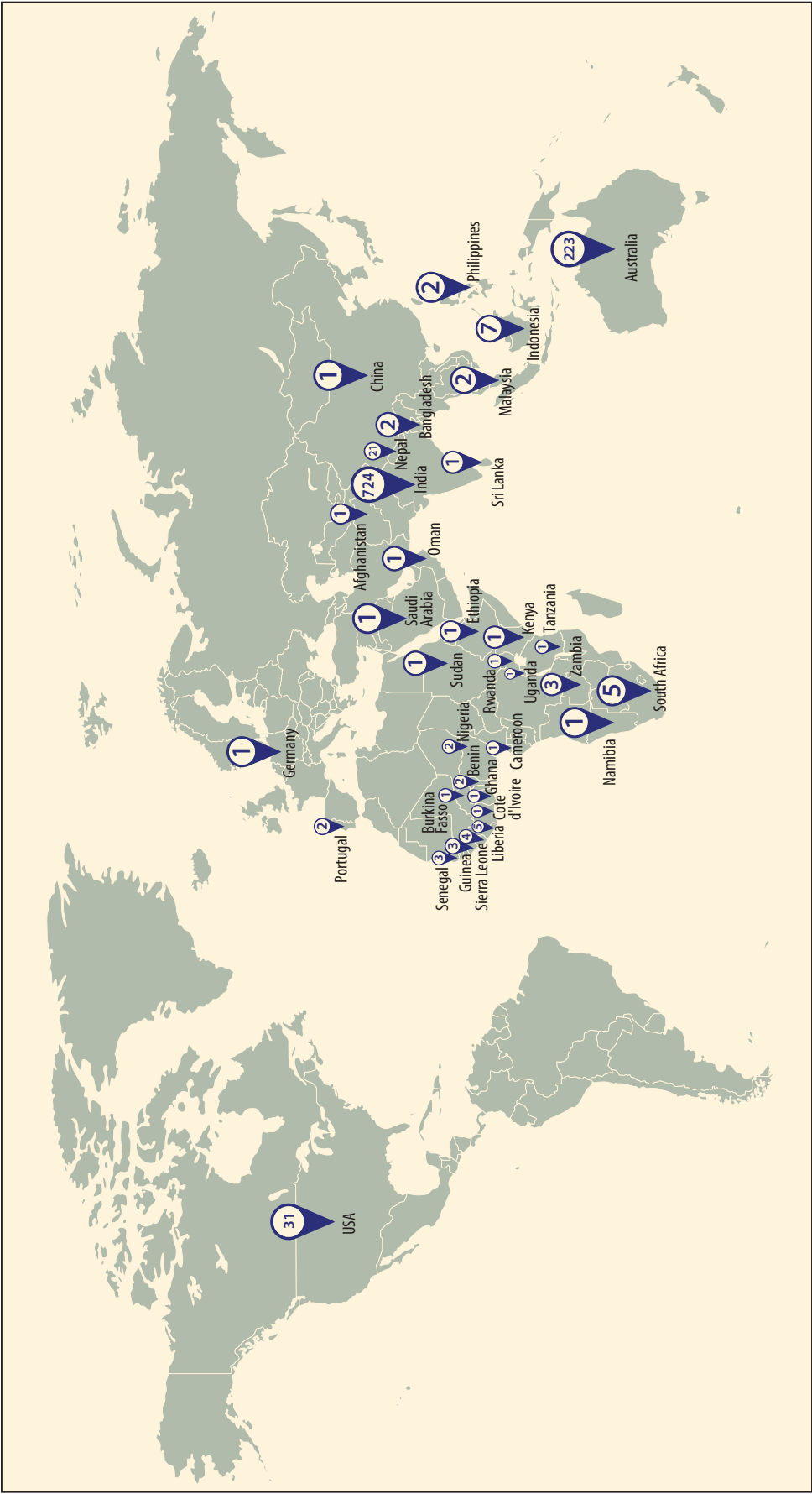
LVPEI employs the most modern medical and surgical techniques in all subspecialties of eye care. Basic and clinical researchers interact closely on projects to understand the causes and management of the most prevalent eye diseases and conditions. Extensive research on community eye health focuses on understanding the barriers to uptake of services, eye health promotion strategies, epidemiology of eye diseases and eye health models. All this is done within a streamlined administrative and managerial system. LVPEI thus provides a unique training ground for all cadres of eye care workers, from ophthalmologists and optometrists to all paramedical and administrative cadres and community eye health personnel in the eye care service delivery chain. Participants for these courses come from all over India and from across the world, making for a richly interactive learning forum.



Field Visits

Field visits arranged during the courses enable students to observe various community eye health programs and projects. Participants also get the opportunity to conduct field projects, either in small groups or individually.

Map showing trainees at GPR ICARE (2001 - 2024)



Master's in Community Eye Health	29
Diploma in Eye Health Management	182
Diploma in Community Eye Health (6 months)	186
Certificate course in Program Management and Evaluation	175
Certificate course in Community Eye Health	155
Online course in Community Eye Health	223
Other Courses	98
Total Trained	1059

Testimonials

The course is well-structured and beneficial for healthcare professionals from countries who want to initiate new and impact-oriented eye care programs.

Andre Ridagba, Benin

I found the course very motivating. With the training received, I will be able to substantially contribute towards the community eye health programs in my country, aimed at eliminating avoidable blindness.

Sayed Amin Hamedi, Kabul, Afghanistan

It is a very well designed training program for those who do not have any prior experience or qualification to manage eye care projects.

Pelagie M Boko-Collins, Benin

The course helped me understand how different sectors work in collaboration to make public health accessible to all.

Tabonga Naluonde, Zambia

Overall, a very interesting and informative course.

Swapnil Thakur, India

Found it very insightful, concise and relevant to the current requirement in the field of community eye health.

Dr Queen Gogoi, Assam, India

Being a surgeon, I didn't know much about public eye health. This course has taught me so many new things. It is useful to all those who want to make a career in Public Eye Health.

Dr Nikita Arora, Haryana, India

A very beneficial course for the managers! You get to learn so much from the practical experiences of faculty and other delegates.

Rayaisse Emile, Burkina Fasso

I can now positively contribute to the strengthening of the community eye health programs in my country.

Konan N'guessan, Abidjan, Cote d'Ivoire

A very well designed course in the field of community ophthalmology.

Titok Hariyanto, Indonesia

I learnt the useful strategies and measuring tools needed for the successful execution of community eye health programs.

Barbara Anang Marok, Nigeria

The best I liked about the course was the - group discussions, log frame analysis, data management techniques and the team activities.

Mahesh Chandra Ambadker, India



Ramachandra Pararajasegaram Community Eye Health Education Centre

Gullapalli Pratibha Rao International Centre for Advancement of Rural Eyecare
L V Prasad Eye Institute, Hyderabad, India

