



LV Prasad Eye Institute

Nava Bharat Eye Centre (NBEC)

Paloncha, Bhadradi Kothagudem District, Telangana

(2011-2026)



Gullapalli Pratibha Rao

International Centre for Advancement of Rural Eye care

L V Prasad Eye Institute, Hyderabad

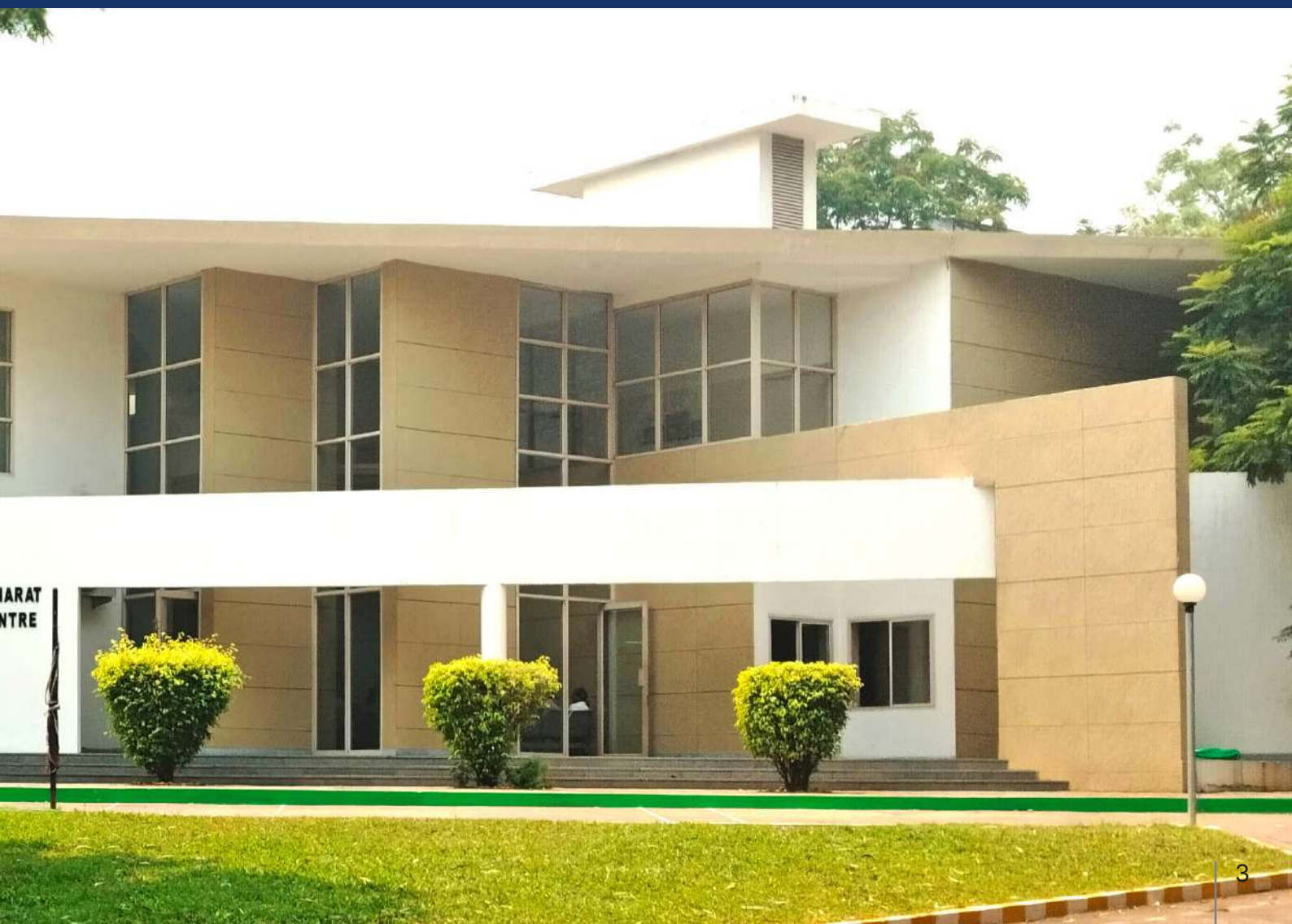
The Nava Bharat Eye Centre (NBEC), the ninth secondary centre of L V Prasad Eye Institute (LVPEI) in Telangana, was inaugurated on February 19, 2011, in Paloncha, Bhadrachalam district. The centre is supported by Nava Bharat Ventures (NBV) Limited, led by Sri Ashok Devineni, Chairman and Sri P T Vikram Prasad, Managing Director. Along with providing the land for the centre, they also facilitated the construction of the centre and continue to support it till date. LVPEI's association with Nava Bharat Ventures dates back to 1989, when they supported the setting up of the Ramayamma International Eye Bank. They also supported the implementation of several eye care initiatives for marginalized communities, and provided financial assistance towards the establishment of LVPEI's Bhubaneswar campus.

The NBEC caters to the eye care needs of a large group of tribal and other underprivileged populations. It is equipped with modern



eye care facilities - Retina Diagnostics, Optical Coherence Tomography (OCT), Fundus Camera, etc. Community screening programs are conducted throughout the year.

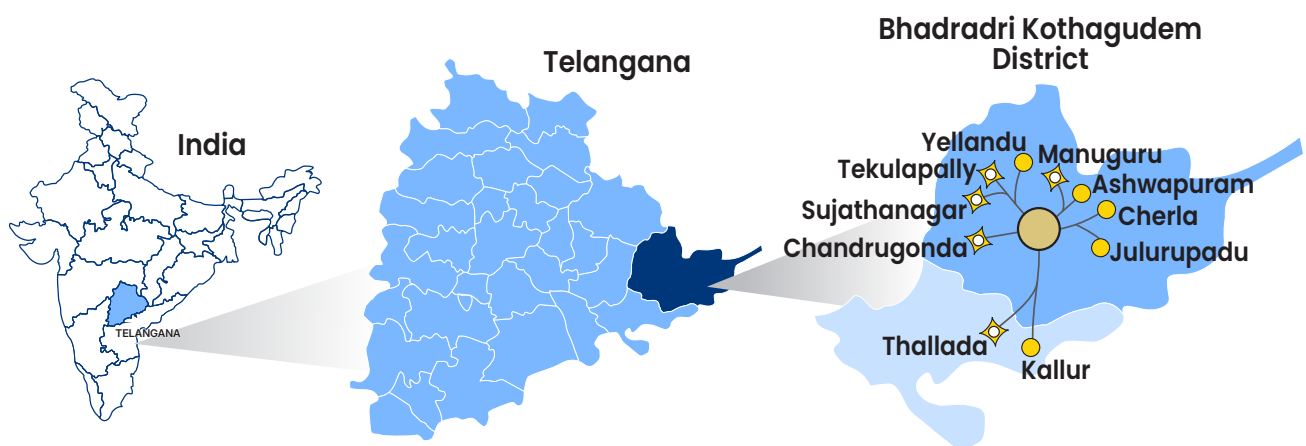
The centre is connected to ten vision centres - Yellandu, Kallur, Manuguru, Ashwapuram, Julurupadu, Tekulapally, Cherla, Chandrugonda, Thallada and Sujatha Nagar. These centres are supported by Latter-day Saint Charities and the local community. Nava Bharat Projects Limited provided support to upgrade the Sujathanagar, Julurupadu, Yellandu, Ashwapuram and Thallada vision centres into technologically advanced vision centres, in March 2025.



Village Vision Complex – Paloncha

L V Prasad Eye Institute established the NBEC, its ninth secondary centre, in Bhadradi Kothagudem district to cater to the eye care needs of nearly 0.5 million people. Historically, the region was part of the extensive Zamindari estate known as Husanabad Shankaragiri or Palvancha Zamindari under the Nizam's dominion, with the name Palvancha attributed to Captain Glasfurd. The Zamindar of Bhadrachalam also held the title of Zamindar of Palvancha.

Paloncha is a municipality located approximately 290 km east of Hyderabad in Telangana. Recognized as an important industrial town, it is home to the KTPS Power Generation Plant and is situated near prominent attractions such as the Kinnerasani Wildlife Sanctuary and dam. The town also serves as a major industrial hub in close proximity to the temple town of Bhadrachalam.



- Community eye care programs were initiated in 2011
- The LIVES Project (Nov-Jan'2026) is a community-based initiative that strengthens primary eye care services to reduce avoidable blindness and improve livelihoods in under-served communities.



I am pleased to share the remarkable journey and impact of Nava Bharat Eye Centre, the ninth secondary centre of L V Prasad Eye Institute (LVPEI) in Telangana.

Our Impact so Far:

- 540,831+ patients served through OPD and 56263+ surgeries, with over 60% receiving free treatment.
- Specialty services for cornea, glaucoma, retina, and oculoplastics eye care and 1820 people benefited from the speciality services.
- 256,052 + patients screened through the vision centre network
- 38010 + individuals screened through community based activities
- 1972 + clients receiving low vision and rehabilitation services

Technology has played a transformative role in bridging the gap between primary, secondary, and tertiary care—reducing patient travel time, delivering doorstep care, and lowering carbon footprint.

We sincerely thank the Nava Bharat Venture Limited, Mr. Ashok Devineni the faculty of LVPEI network, and the dedicated staff of Nava Bharat Eye Centre, Paloncha for their invaluable contributions in nurturing this centre.

As we move forward, we remain committed to our mission and vision—to ensure quality eye care for all, so that all may see.

Dr Rohit Khanna
Director-GPR ICARE

Timeline of Services

OPD & Surgical Services



February 2011

June 2011

Community Eye Care



September 2011



Operating Room

Low Vision Services



January 2014

September 2014

LIVES Project



**November -
January 2026**



**Rehabilitation
Services**

Impact

Community screening
at the base of the pyramid

38,010

Screenings at
Primary Eye Care Vision Centres
under NBEC

2,56,052

100% services
free of cost

Outpatient visits at
NBEC

5,40,831

Surgeries at
NBEC

56,263

60% services
free of cost

Rehabilitation Services

January 2011 – December 2026

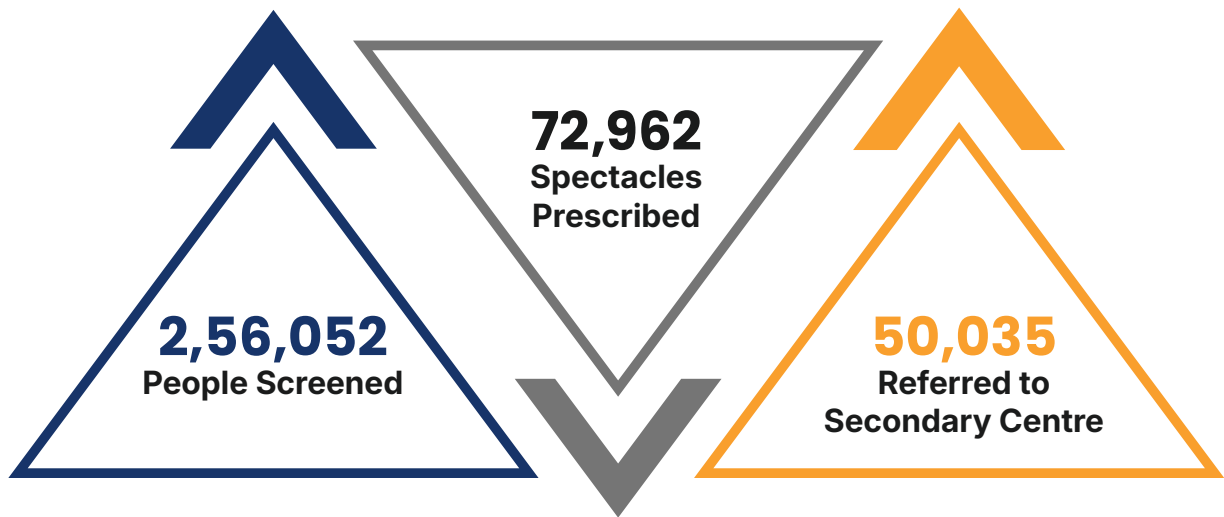
1,808
Rehabilitation
services

164
Low vision
services

Community Screenings

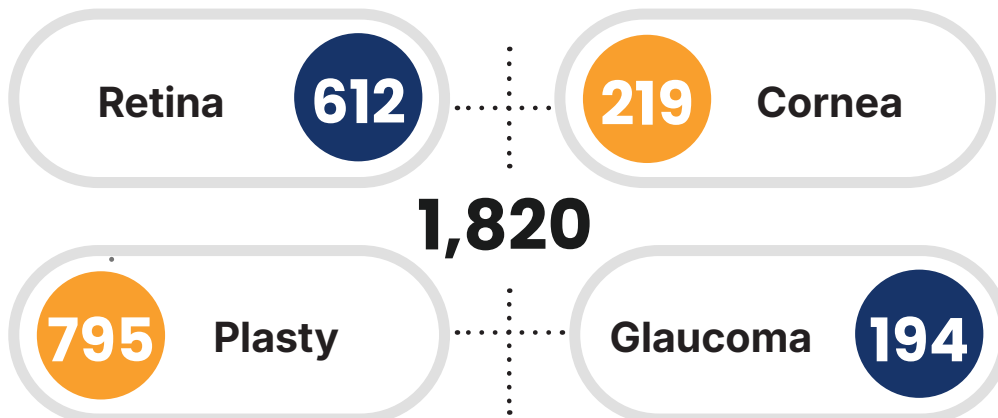


Services @ Primary Eye Care Vision Centres



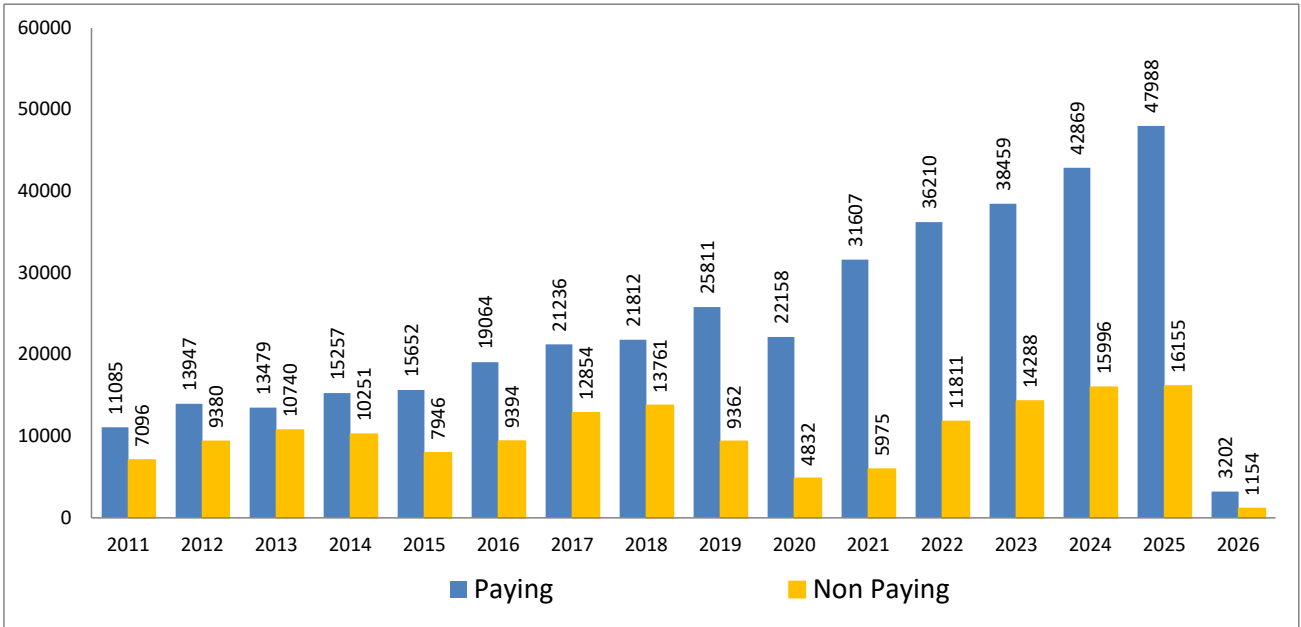
Sub-specialty surgeries performed

January 2011 – December 2026



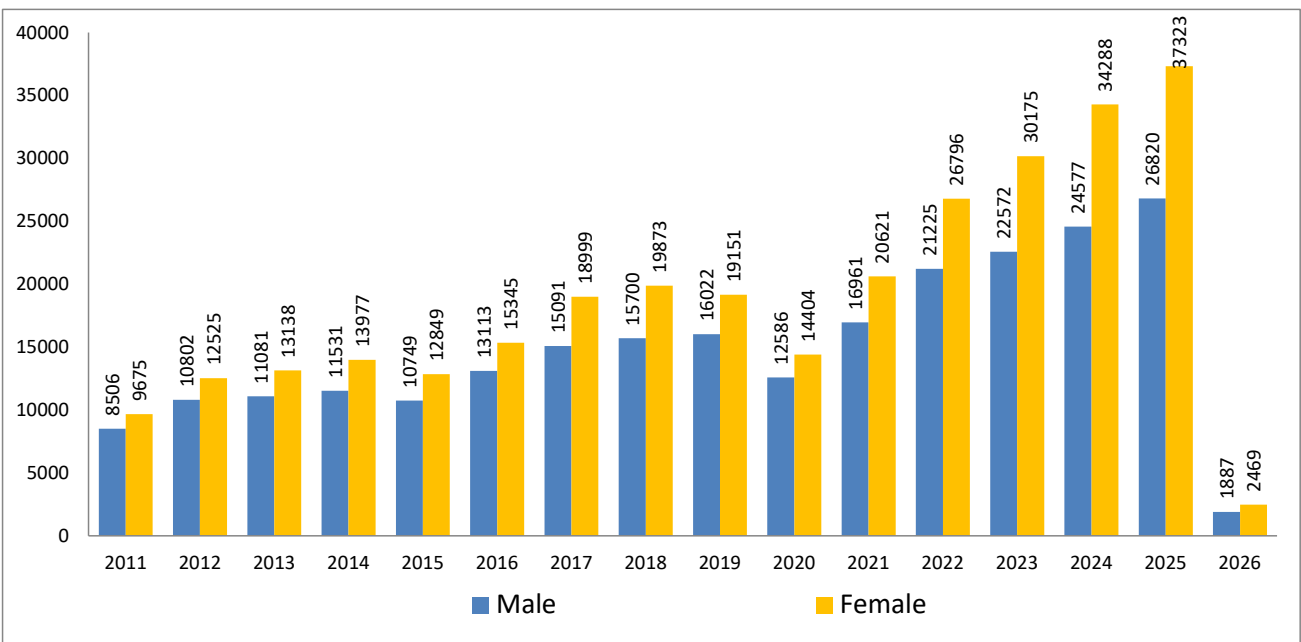
Year-wise OPD - Paying & Non Paying

(February 2011 to January 2026)



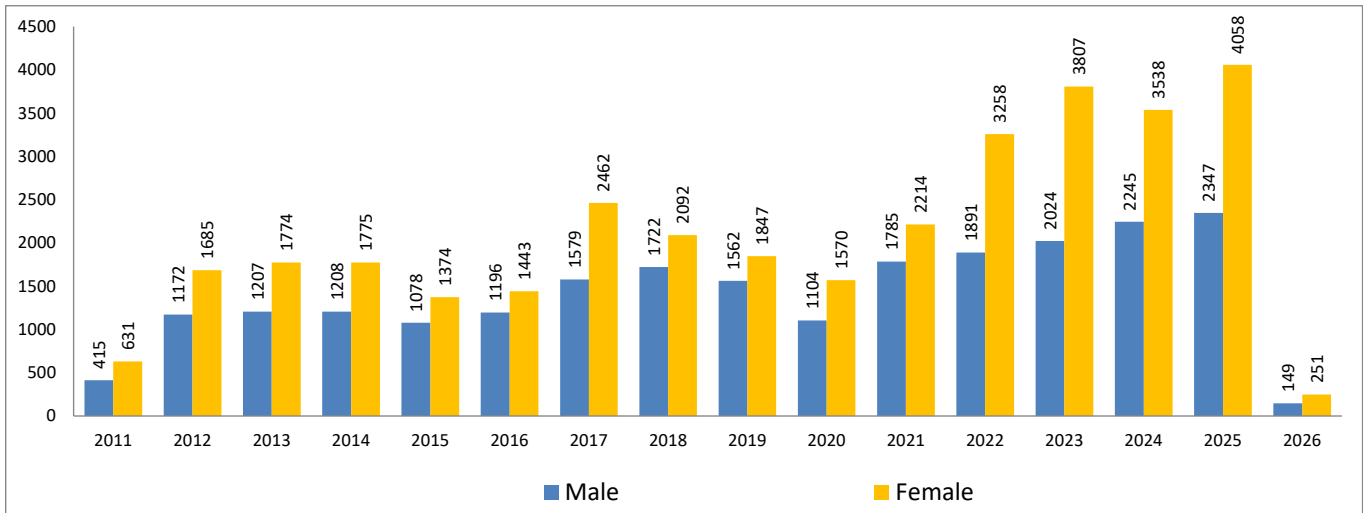
Year-wise OPD - Male & Female

(February 2011 to January 2026)



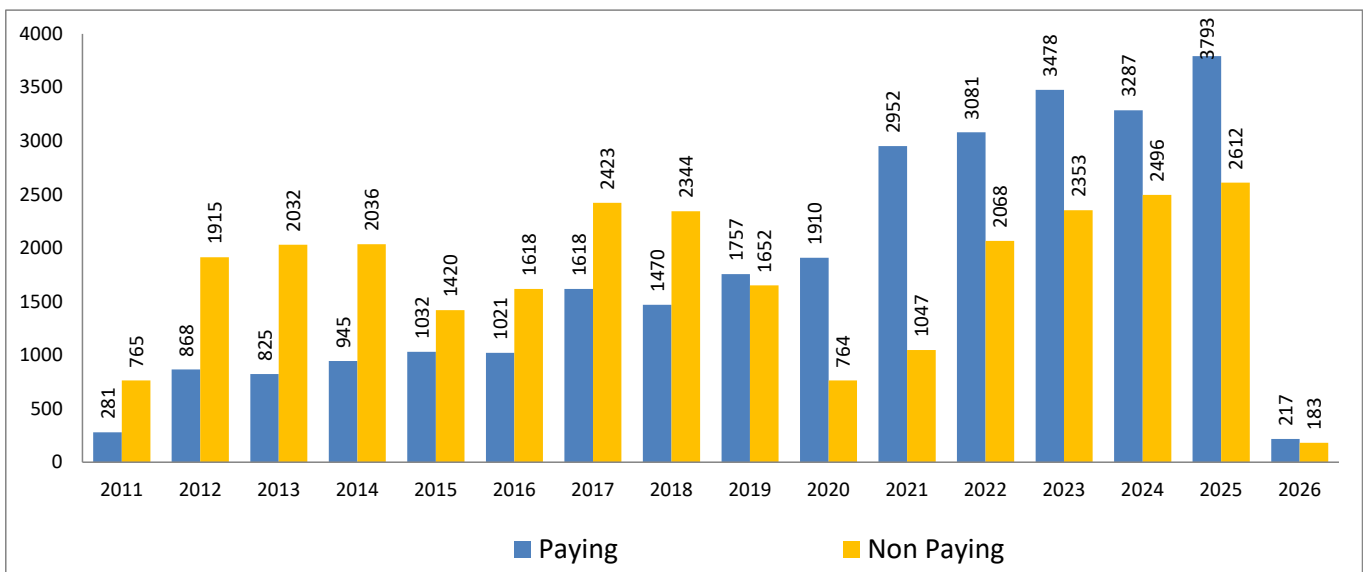
Year-wise Surgeries - Paying & Non Paying

(February 2011 to January 2026)



Year-wise Surgeries - Male & Female

(February 2011 to January 2026)



Advanced Diagnostic Procedures

(February 2011 to January 2026)

1,03,843
(38% Non-Paying)

Team@ Nava Bharat Eye Centre - on ground to serve



The team continues to work ceaselessly, with a pledge to serve as many as possible. Patients continue to be our ambassadors, taking forward our mission, so that all may see.



A Ray of Hope: How Timely Care Saved a Young Woman's Vision



Mrs Poluri Uma Shankari, a 24-year-old resident of Charla village, lives nearly 85 kilometers away from our secondary centre, the Nava Bharat Eye Centre in Paloncha. A hardworking young woman, she earns her livelihood as a salesperson in a small ladies' fashion store in her village.

One day, while speaking to a customer at the store, she shared her medical distress. She had been experiencing severe pain in her right eye and was unable to tolerate light. Concerned for her well-being, her customer advised her to visit

the L V Prasad Eye Institute's primary eye care vision centre in her own village of Charla. Following up on the advice, she visited the vision centre the very next day. The vision technician conducted a detailed slit-lamp examination and, through tele-ophthalmology consultation, ensured that she was examined by an ophthalmologist. She was prescribed eye drops and was advised to consult with the doctor at the secondary centre in Paloncha, while continuing the medication.

Within a couple of days, upon further examination under the slit-lamp, she was diagnosed with a corneal problem that required immediate advanced care. From the Nava Bharat Eye Centre, Paloncha, she was promptly referred to the Kallam Anji Reddy (KAR) Campus in Hyderabad.

In Hyderabad, after completing all necessary pre-operative evaluations, she underwent a corneal tear repair procedure. Following the successful surgery, she diligently adhered to the prescribed medication and follow-up instructions. Gradually, her pain subsided, and her vision improved significantly. Today, she mentions being relieved and overjoyed to see clearly again—free from pain and discomfort. She also thanked every member of the L V Prasad Eye Institute who supported her throughout her healing journey.

Stories like Mrs Uma's strengthen our belief that timely medical interventions, well-connected and compassionate health care networks make a huge impact on the lives of the people in the communities we serve.

Beneficiary stories

Transforming Lives Through Opportunity: The Journey of Ms Rajeswari Tejavath



Rajeswari Tejavath hails from Parvathagiri village in Somla Thanda Mandal, Mahabubabad District. Born into a family with financial constraints, she faced several hardships from an early age. She lost her mother when she was just three months old. Despite these hardships, she remained determined to build a stable future for herself and her family.

After completing her Intermediate education, financial constraints limited her ability to pursue higher studies. In 2010, she learned about the six-month support staff (MRD Department) training program at L V Prasad Eye Institute (L.V.P.E.I.), Hyderabad. She was selected for the training, which marked the beginning of a transformative journey.

Under the mentorship of dedicated faculty and seniors, she gained professional skills, discipline, and confidence. The training proved to be a turning point in her life. Upon successful completion of the program, she was appointed as an employee of LVPEI on February 19, 2011.

During her training, she encountered a serious personal health challenge when she developed a severe foot condition. At this critical time, the institute (especially Rajashekar Garu) extended unwavering support, facilitating appropriate treatment, including a Jaipur Foot procedure. This compassionate intervention not only restored her mobility but reinforced her belief that L V Prasad Eye Institute is more than a work place, that it is a family that stands by its people.

With renewed determination, she continued to grow professionally and today serves as a senior patient care counsellor, guiding patients with empathy and commitment. Her journey reflects resilience, dedication, and the transformative impact of opportunity and institutional support.

Her story stands as a testament to how LVPEI nurtures talent, supports its employees, and empowers individuals to build meaningful careers while contributing to comprehensive eye health.

From Struggle to Strength: The Inspiring Journey of Ms MD. Shainaz



For the past 14 years, MD. Shainaz has been a dedicated and compassionate member of L V Prasad Eye Institute (LVPEI). Her journey is one of resilience, determination, and transformation. Coming from a modest background, Shainaz faced financial challenges early in her marriage. Her husband, a lorry mechanic, worked hard to support the family, but the responsibilities and expenses were significant. Despite these difficulties, Shainaz was determined to contribute meaningfully and build a secure future for her family.

Before her employment with LVPEI, Shainaz explored various opportunities that would give her a stable career. Her determination to uplift her family never wavered. She continued to believe that a better opportunity would come her way.

She came in contact with LVPEI as an institution quite by chance, during a routine eye check up for her nephew at the institute. With courage and hope, she met the administrator and enquired about job openings at the institute, and expressed her interest in working here. Recognizing her sincerity and potential, she was selected as a patient care translator and began her duties on May 1, 2012.

What started as a simple opportunity soon became a life-changing journey. Through dedication, discipline, and hard work, Shainaz steadily grew in confidence and responsibility. Her compassionate approach toward patients and her commitment to service earned her the trust and respect of both colleagues and seniors. Over time, she was promoted to the role of patient care counsellor, where she continues to guide and support patients with empathy and understanding.

Today, Shainaz looks back at her journey with pride and gratitude. LVPEI provided her not just employment, but stability, dignity, and the confidence to stand strong for her family.

In her words "L.V.P.E.I. gave me not just employment, but dignity, confidence, and purpose."

Her story stands as a powerful reflection of resilience and the transformative power of opportunity — a reminder that with determination and the right support, lives can truly be changed.

Best Employee Award Story

Happy Employee Story – Ms Konjarla Bhumika



I'm a vision technician at the Nava Bharat Eye Centre in Paloncha. After completing my intermediate, I decided to build a career in eye health, by enrolling for the vision technician training program in Hyderabad.

I successfully completed my vision technician (VT) training during 2022–2023. The training not only equipped me with the professional skills required, but also made me confident to serve people in need of eye care.

I began my journey as a VT at the Tekulapally vision centre. After eight months, I got an opportunity to work at the LVPEI secondary centre at Paloncha, the Nava Bharat Eye Centre. I feel proud to be part of such a respected institution.

I come from a middle-class family. My father worked very hard as an auto driver to support our family. My mother is a homemaker who takes care of our home and family with great dedication. I have an elder sister who is married. Today, I take the responsibility to support and care for my family. It gives me great pride to stand strong for my family and earn respect in society.

I am truly thankful to LVPEI for giving me this opportunity to grow professionally and personally. Working at the NBEC Paloncha centre makes me very happy. I am committed to serving patients with dedication and compassion.



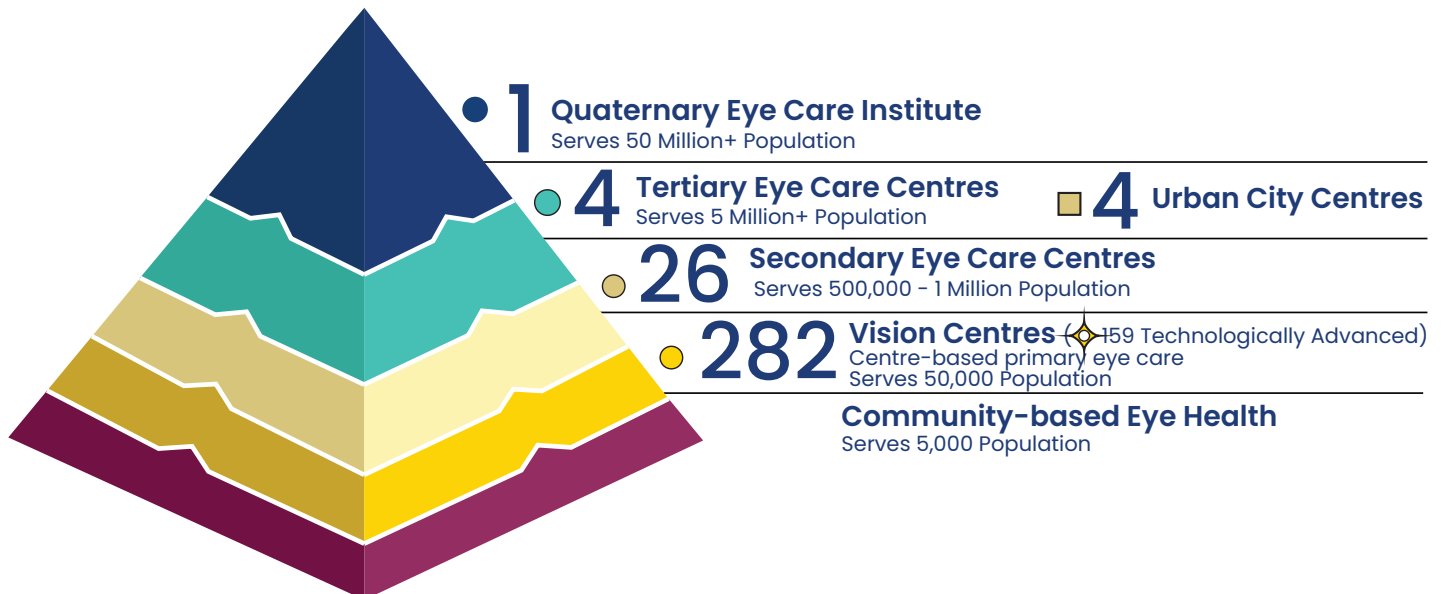
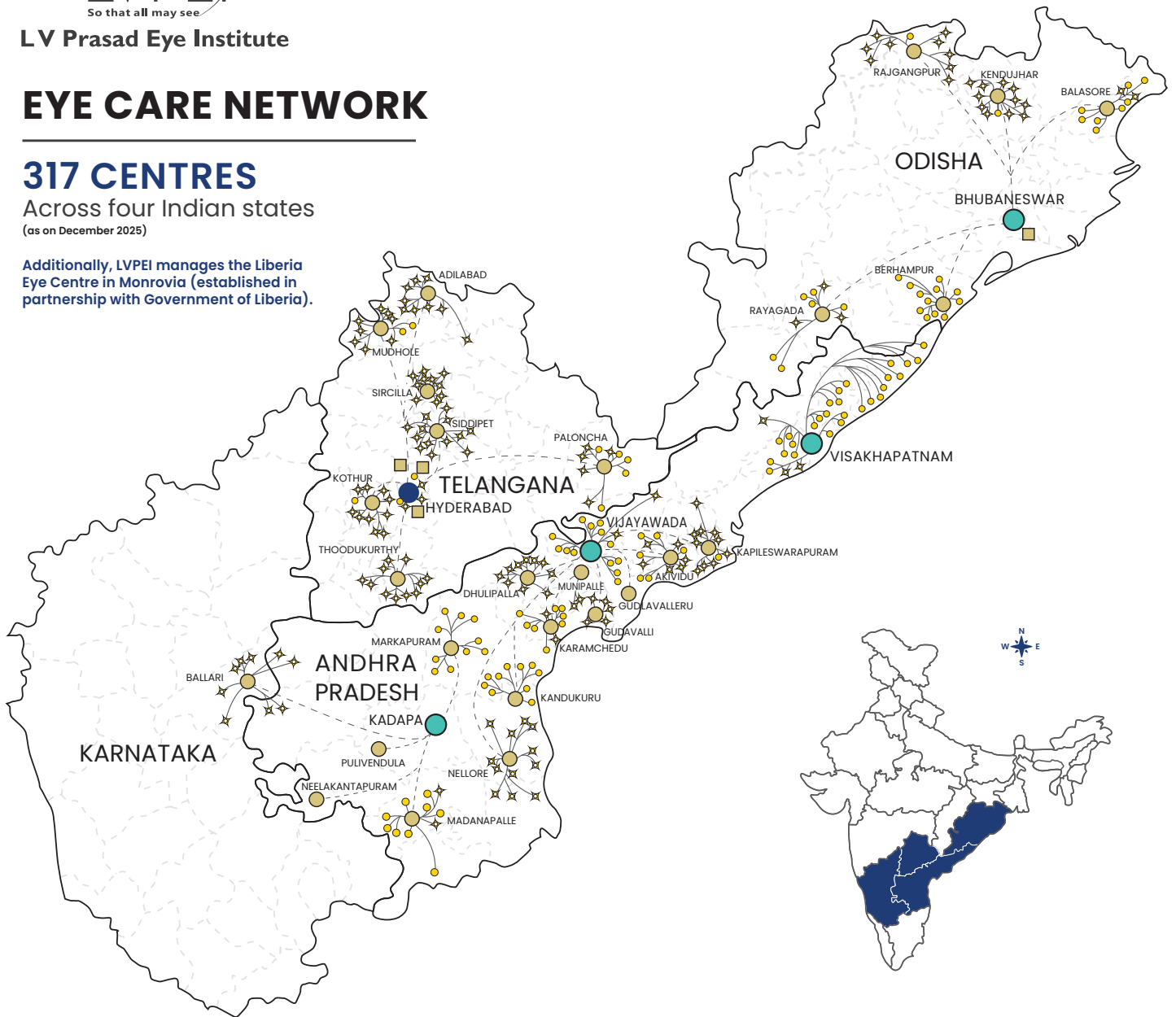
LV Prasad Eye Institute

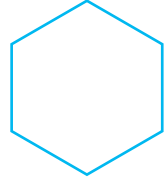
EYE CARE NETWORK


317 CENTRES

Across four Indian states
(as on December 2025)

Additionally, LVPEI manages the Liberia Eye Centre in Monrovia (established in partnership with Government of Liberia).






LV Prasad Eye Institute

**Nava Bharat Eye Centre
(NBEC)**

Paloncha, Bhadradi Kothagudem District,
Telangana

